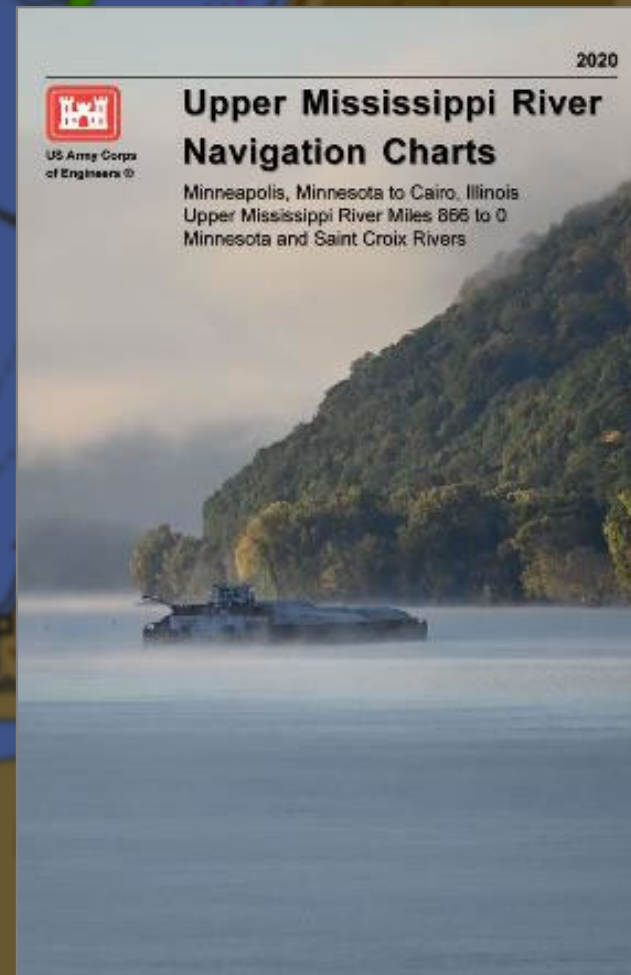


# NAVIGATION CHART UPDATE

Prepared by Daniel McBride  
For Mississippi River Managers Meeting  
08 February 2023



*“The views, opinions and findings contained in this report are those of the authors(s) and should not be construed as an official Department of the Army position, policy or decision, unless so designated by other official documentation.”*



US Army Corps  
of Engineers®



# PAPER CHART BOOK UPDATE- UPDATE-UPDATE

- Finished
- Print Early ~~2018~~ ~~2019~~ ~~2020~~ **2023**
  - Awaiting proofs from print vendor
  - Announcement, website updates pending availability
  - Additional mini-book product
    - DOES NOT MEET CHART CARRIAGE REQUIREMENT




# PAPER CHART BOOK SALES

- All sales through Government Printing Office (GPO) Bookstore [LINK](#)
  - Awaiting proof and sales page setup
  - No longer through Visitor Center

The screenshot shows the GPO U.S. Government Bookstore website. The header includes the GPO logo, the text "U.S. GOVERNMENT BOOKSTORE", and a search bar. Below the header are navigation links for "TOPICS", "AGENCIES", "COLLECTIONS", and "new titles by TOPIC". The main content area is titled "USACE Navigational Charts" and features a description of the U.S. inland navigation system. Below the text is a list of 22 items, with the first few visible: "Upper Back Warrior-Tombigbee Navigation Chart", "Lower Back Warrior-Tombigbee Navigation Chart", "Green River Navigational Chart", "Sixe Warrior-Tombigbee River Navigation Chart", and "Alachua River and Outlets to the Gulf of Mexico Navigation Chart".


# PAPER CHART BOOK DOWNLOADS

 Upper Mississippi River 2020 Navigation Chart Page Downloader

**Chart 57 - Upper Mississippi River, 2020 Edition**

Chart 57 covers the reach between river miles 579 and 584 at a map scale of 1:24000. Download the chart by clicking on the castle icon below.

Chart Download Link:



Supplemental A [View](#)

Supplemental B [View](#)

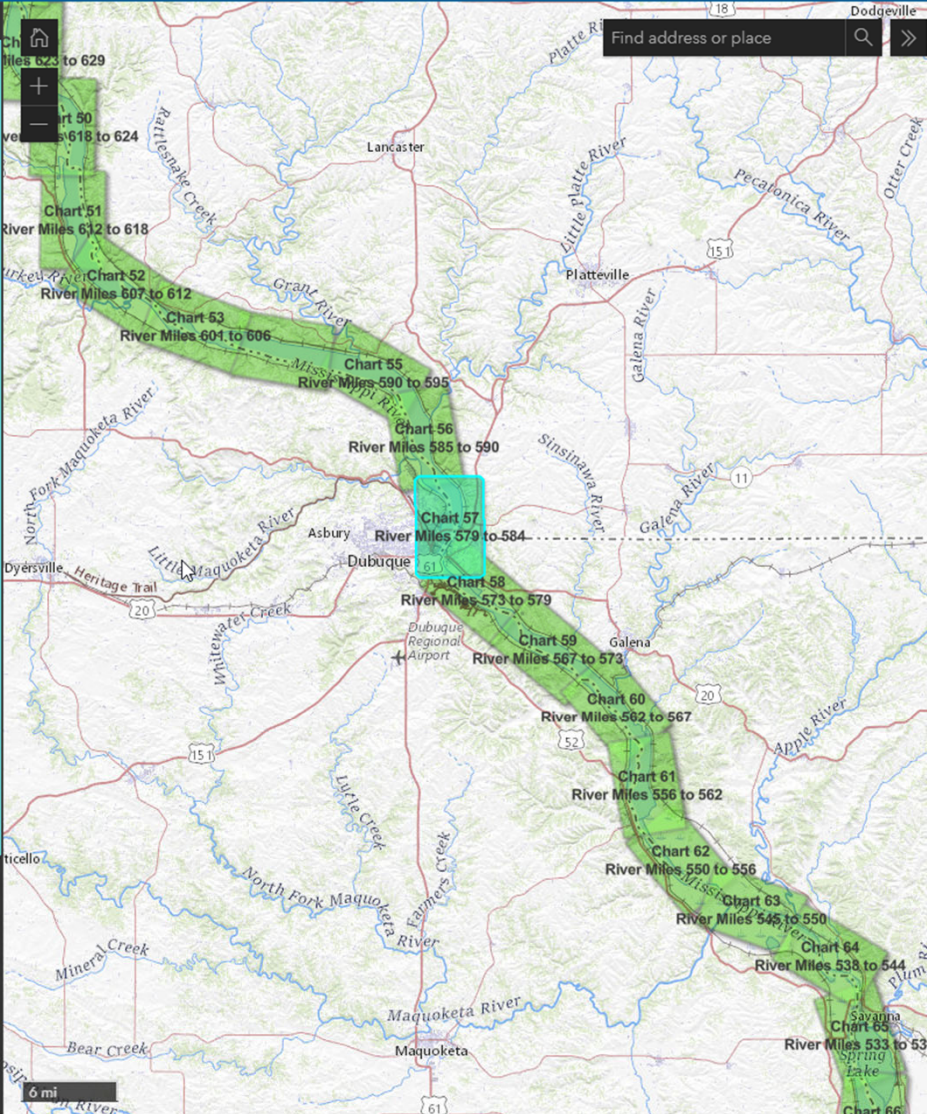
Supplemental C

Supplemental D






Supplemental E


Supplemental F




Zoom

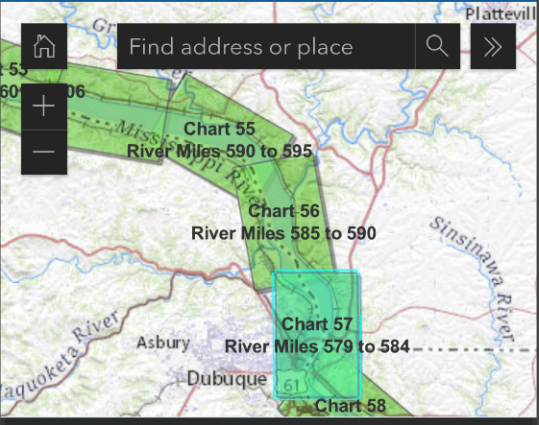


8:48 📶 🔋 80%

  [arcgis.com/apps](https://arcgis.com/apps)   

 Upper Mississippi River 2020 N...


   


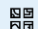
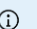



**Chart 57 - Upper Mississippi River, 2020 Edition**

Chart 57 covers the reach between river miles 579 and 584 at a map scale of 1:24000. Download the chart by clicking on the castle icon below.

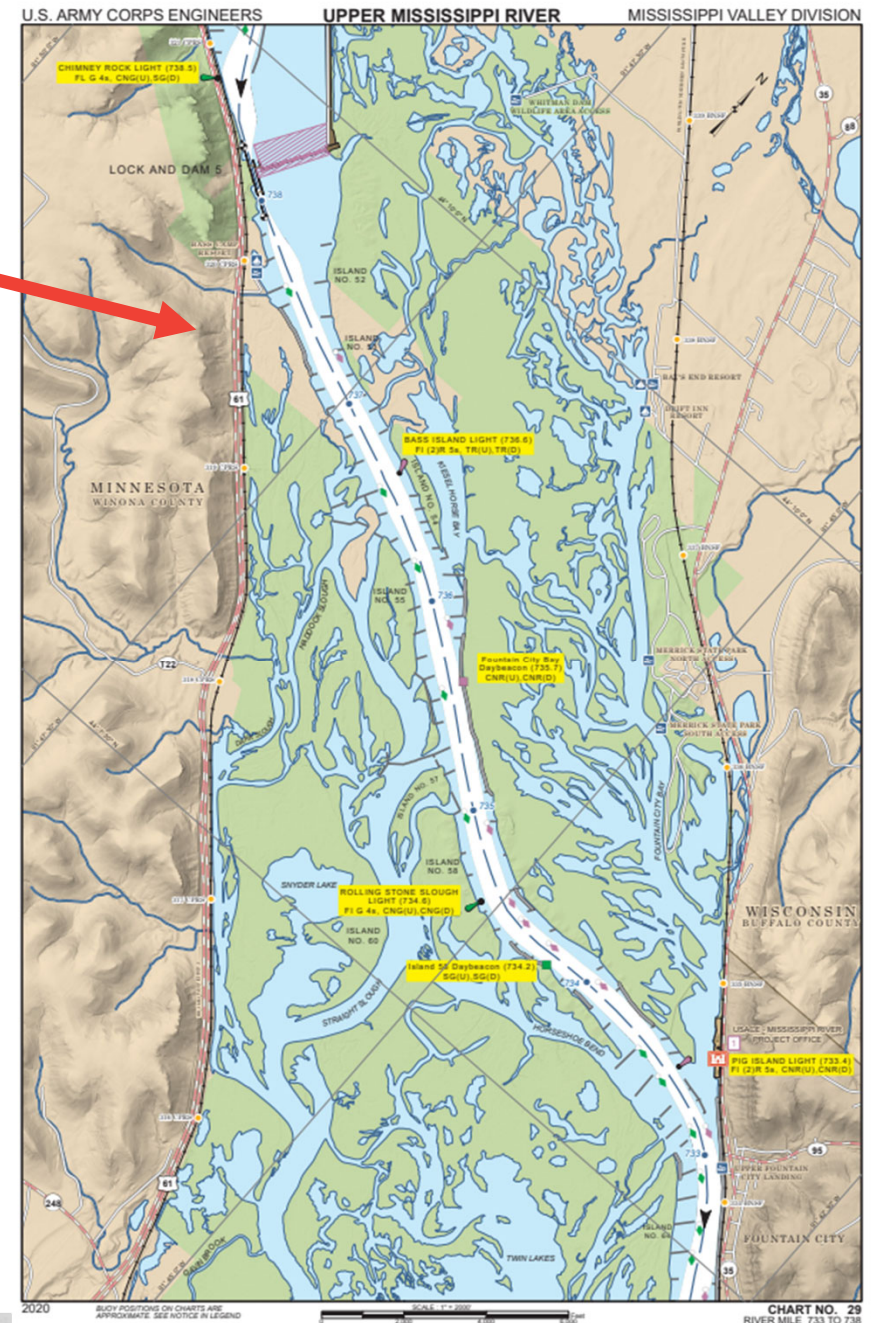
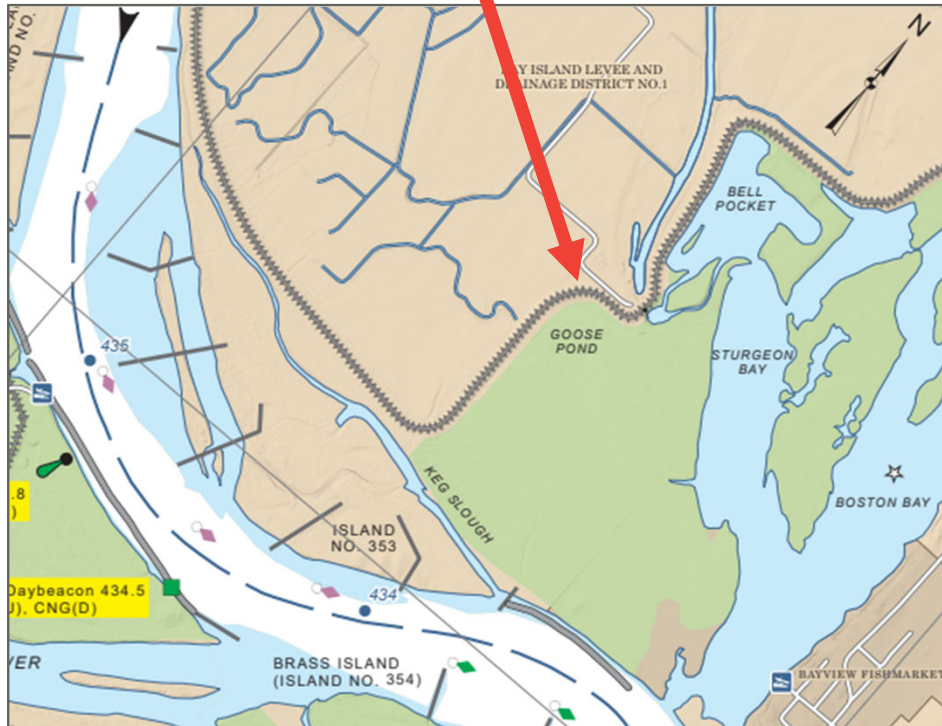
Chart Download Link:



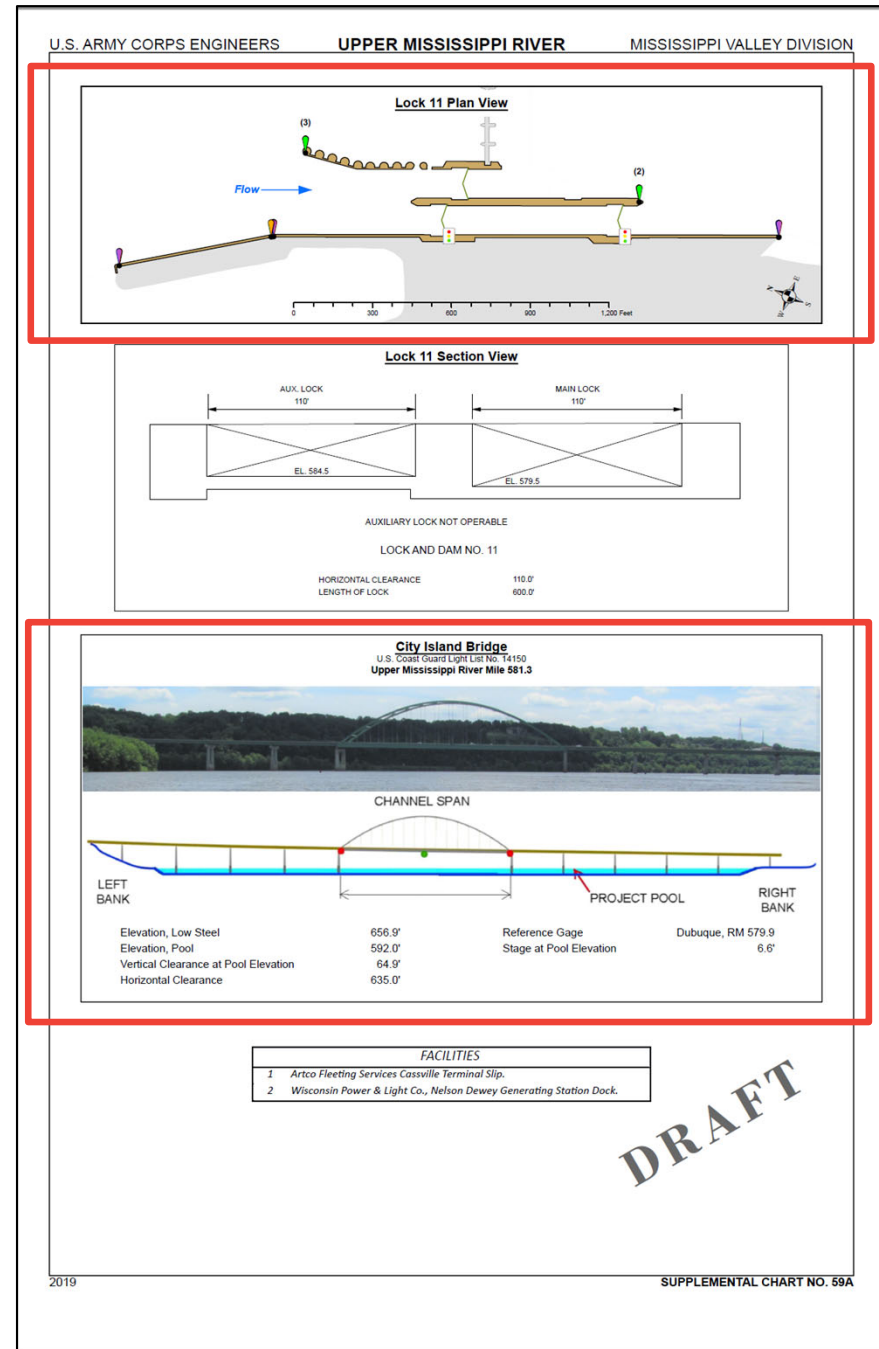
# PAPER CHART BOOK CHANGES

- Same overall color scheme
- Add topographic hillshade
- Other minor cartographic changes



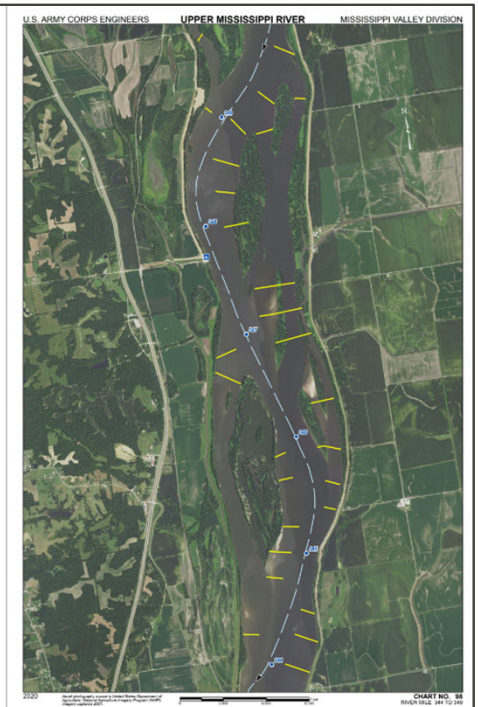
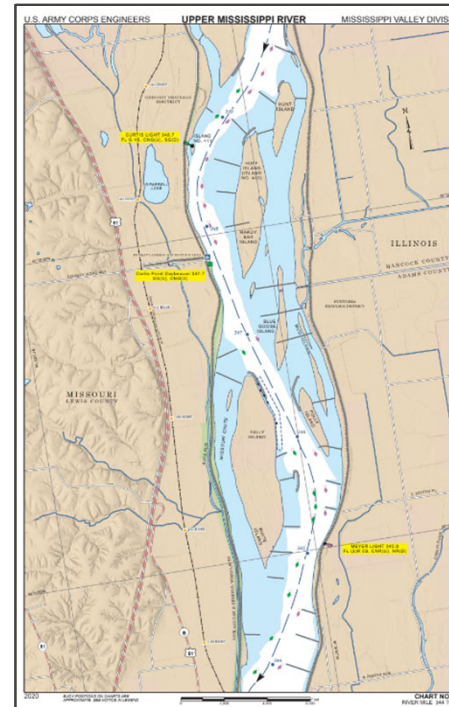
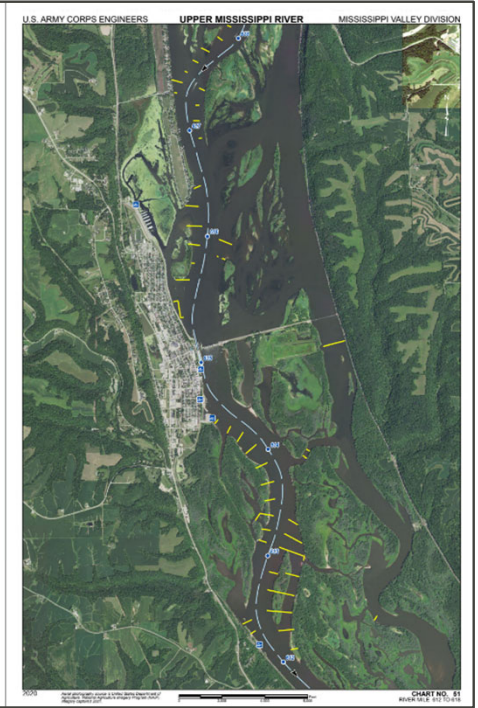
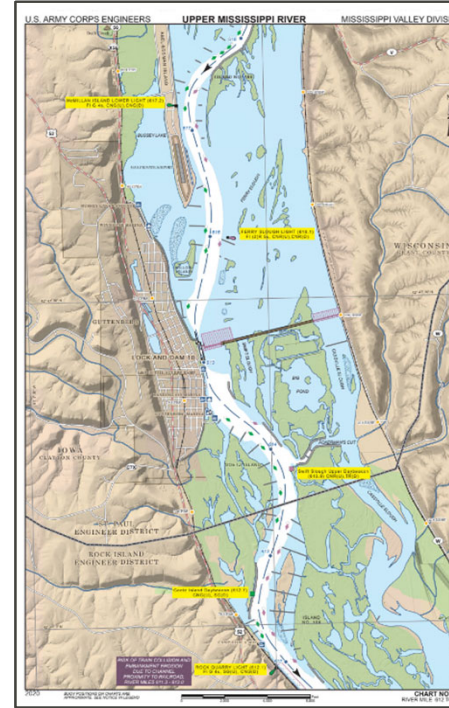
# BRIDGE PROFILES & LOCK PLANS – NEW LOOK

- Lock plan view detailed maps – NEW
- Bridge profiles include a photo and consistent drawing style with Ohio River



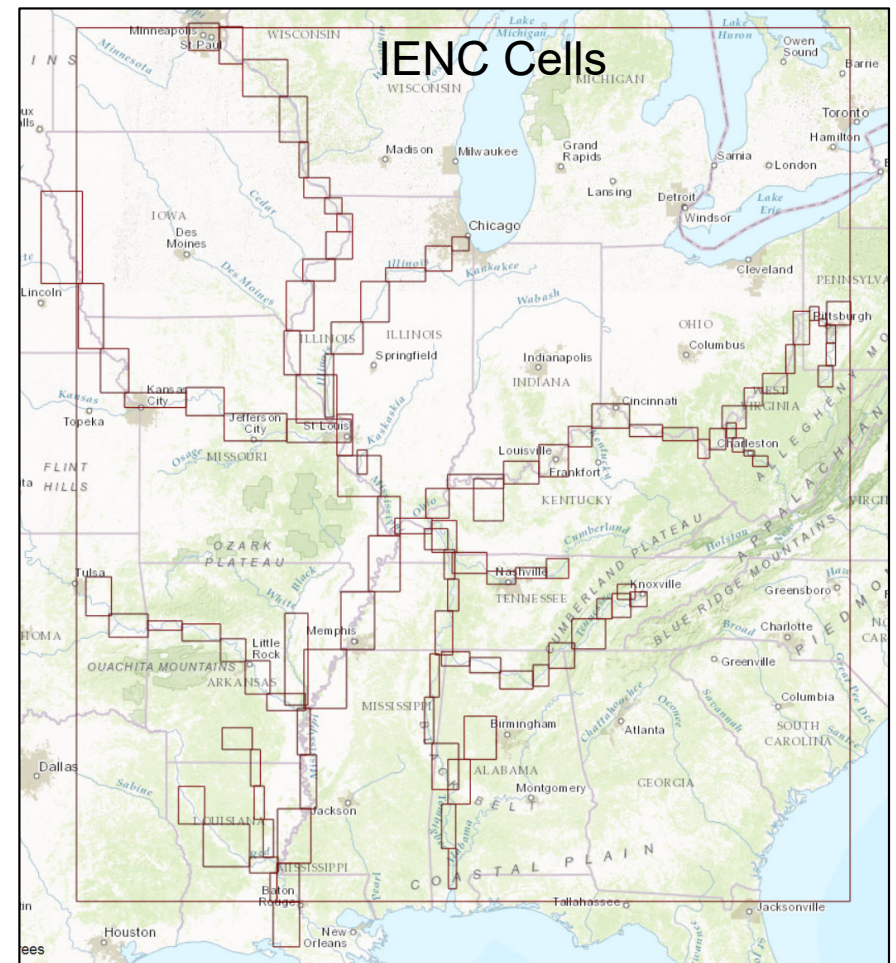
# MINI BOOK

- Aerial Photo opposite Chart Page
- Reduced to ~8.5" x 11" page
- Will sell through GPO Bookstore
- MVP & MVR separate books



# IENC PROGRAM

- S-57 Charts for ECS
- Inland Features
- Monthly Updates
- District Source
- **Annual Program Review: 02-03 MAY**
  - **Dubuque, IA**





# IENC FEEDBACK

Discrepancy Reporting Tool: In Development

Please send feedback to:

[agc-ienc@usace.army.mil](mailto:agc-ienc@usace.army.mil)

General IENC info:

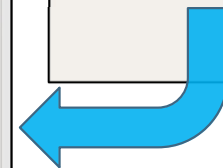
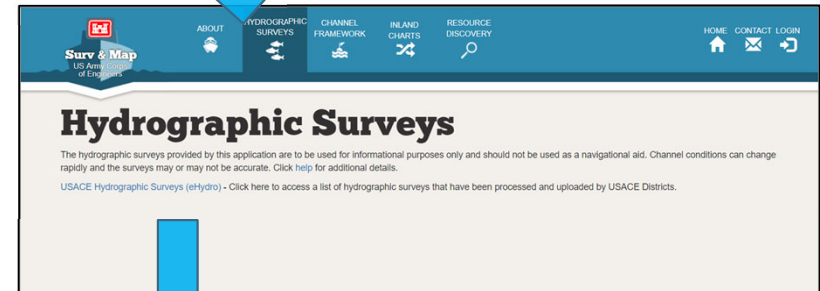
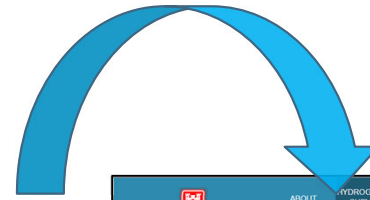
<http://ienccloud.us/>



# EHYDRO PROGRAM

Navigation Portal:

<http://navigation.usace.army.mil/Survey/Hydro>



USACE Hydrographic Surveys powered by eHydro

**USACE District:**  
All

**USACE Channel:**  
Loading...

**Channel ID:**  
All

**Survey Date Range:**  
All Surveys Last 60 days  
Custom Date Range

**Select Survey:**  
List is limited to 50 records. To see older surveys, configure a custom date range or zoom in on the map to limit results.

- District: CEMVN  
Name: SOUTHWEST PASS - SHEET 11  
Survey ID: SW\_11\_SWP\_20190201\_CS  
Survey Date: 2/1/2019  
Download Data
- District: CEMVN  
Name: SOUTHWEST PASS - SHEET 12  
Survey ID: SW\_12\_SWP\_20190201\_CS  
Survey Date: 2/1/2019  
Download Data
- District: CEMVN  
Name: SOUTHWEST PASS - SHEET 8  
Survey ID: SW\_08\_SWP\_20190201\_CS  
Survey Date: 2/1/2019  
Download Data
- District: CEMVN  
Name: SOUTHWEST PASS - SHEET 10  
Survey ID: SW\_10\_SWP\_20190201\_CS  
Survey Date: 2/1/2019  
Download Data

Number of Surveys  
**38,324**  
630 last 60 days

Use the dropdown menus or simply pan and zoom on the map to filter the Hydrographic Survey data.

Use any combination to drill down to the data you are interested in. To remove the filter, set the filter to "All".

- Filter by District
- Filter by Channel
- Filter by Date



US Army Corps  
of Engineers



# QUESTIONS?

Dan McBride

[daniel.j.mcbride@usace.army.mil](mailto:daniel.j.mcbride@usace.army.mil)

